

1

Kenneth M. Adams (American, 1897 - 1966)

Taos Woman, circa 1924

Oil on canvas

Stretcher: 32 × 24 1/8 in. (81.3 × 61.3 cm)

Frame: 36 1/4 × 28 1/8 × 2 1/16 in. (92 × 71.5 × 5.3 cm)

Tacoma Art Museum, Haub Family Collection, Gift of Erivan and Helga Haub, 2014.6.1



2

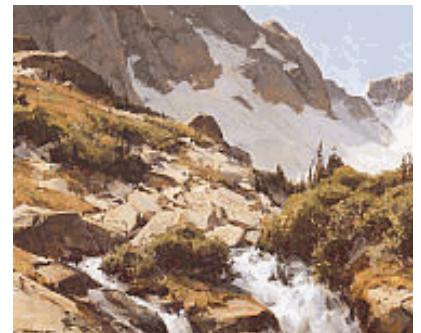
Clyde Aspevig (American, born 1951)

Glacier Fed, 1995

Oil on canvas

Image Overall: 24 x 30 in. (61 x 76.2 cm)

Tacoma Art Museum, Haub Family Collection, Gift of Erivan and Helga Haub, 2014.6.2



3

Clyde Aspevig (American, born 1951)

On the Way to Heaven, 1995

Oil on canvas

Image Overall: 50 x 60 in. (127 x 152.4 cm)

Frame: 59 × 68 7/8 × 2 3/8 in. (149.9 × 175 × 6 cm)

Tacoma Art Museum, Haub Family Collection, Gift of Erivan and Helga Haub, 2014.6.3



4

Clyde Aspevig (American, born 1951)

White Cliffs of the Missouri, 2009

Oil on canvas

Image Overall: 40 x 60 in. (101.6 x 152.4 cm)

Frame: 51 3/4 x 71 3/4 x 2 3/8 in. (131.5 x 182.2 x 6 cm)

Tacoma Art Museum, Haub Family Collection, Gift of Erivan and Helga Haub, 2014.6.4



5

Thomas Hart Benton (American, 1889 - 1975)

The Lonely Horse, circa 1940

Oil on Masonite

Image Overall: 16 x 25 in. (40.6 x 63.5 cm)

Tacoma Art Museum, Haub Family Collection, Gift of Erivan and Helga Haub, 2014.6.5

6

Oscar E. Berninghaus (American, 1874 - 1952)

Taos Rabbit Hunt, circa 1935

Oil on canvas

Image Overall: 30 1/4 x 34 in. (76.8 x 86.4 cm)

Tacoma Art Museum, Haub Family Collection, Gift of Erivan and Helga Haub, 2014.6.7



7

Albert Bierstadt (German-American, 1830 - 1902)

Departure of an Indian War Party, 1865

Oil on board

Image Overall: 17 1/4 x 24 1/4 in. (43.8 x 61.6 cm)

Tacoma Art Museum, Haub Family Collection, Gift of Erivan and Helga Haub, 2014.6.8



8

Studio of George Caleb Bingham (American, 1811 - 1879)

Fur Traders Descending the Missouri, circa 1845

Oil on panel

Image Overall: 4 x 6 1/2 in. (10.2 x 16.5 cm)

Frame: 16 1/2 x 19 in. (41.9 x 48.3 cm)

Tacoma Art Museum, Haub Family Collection, Gift of Erivan and Helga Haub, 2014.6.9



9

Ernest L. Blumenschein (American, 1874 - 1960)

On Pueblo Road, circa 1930

Oil on canvas

Image Overall: 16 x 20 1/4 in. (40.6 x 51.4 cm)

Frame: 22 1/4 x 26 3/16 x 2 13/16 in. (56.5 x 66.5 x 7.2 cm)

Tacoma Art Museum, Haub Family Collection, Gift of Erivan and Helga Haub, 2014.6.10



10

Karl Bodmer (Swiss, 1809 - 1893)

Winter Village of the Minatarres, circa 1834

Watercolor on paper

Image Overall: 10 3/8 x 13 1/4 in. (26.4 x 33.7 cm)

Frame: 17 15/16 x 20 1/4 x 3 1/16 in. (45.5 x 51.5 x 7.8 cm)

Tacoma Art Museum, Haub Family Collection, Gift of Erivan and Helga Haub, 2014.6.11



11

Rosa Bonheur (French, 1822 - 1899)

Rocky Bear and Chief Red Shirt, 1889

Oil on canvas

Image Overall: 25 x 39 3/4 in. (63.5 x 101 cm)

Frame: 37 3/16 x 51 15/16 x 5 11/16 in. (94.4 x 132 x 14.5 cm)

Tacoma Art Museum, Haub Family Collection, Gift of Erivan and Helga Haub, 2014.6.12



12

Edward Borein (American, 1872 - 1945)

Headin' Up the Range, circa 1915

Oil on canvas

Image Overall: 30 x 20 in. (76.2 x 50.8 cm)

Tacoma Art Museum, Haub Family Collection, Gift of Erivan and Helga Haub, 2014.6.13



13

Edward Borein (American, 1872 - 1945)

Bucking Bronc, not dated

Watercolor on paper

Image Overall: 7 1/2 x 6 1/4 in. (19.1 x 15.9 cm)

Tacoma Art Museum, Haub Family Collection, Gift of Erivan and Helga Haub, 2014.6.15



14

Albertus Del Orient Browere (American, 1814 - 1887)

Canonicus and the Governor of Plymouth, 1841

Oil on canvas

Image Overall: 28 3/4 x 35 3/4 in. (73 x 90.8 cm)

Tacoma Art Museum, Haub Family Collection, Gift of Erivan and Helga Haub, 2014.6.16



15

Ken Carlson (American, born 1937)

Bison of the CL Bar Ranch, 2008

Oil on board

Image Overall: 30 x 40 in. (76.2 x 101.6 cm)

Tacoma Art Museum, Haub Family Collection, Promised gift of Erivan and Helga Haub



16

George Catlin (American, 1796 - 1872)

Archery of the Mandan, 1855-1865

Oil on board

Image Overall (Oval): 15 1/4 × 22 in. (38.7 × 55.9 cm)

Frame: 22 5/8 × 29 1/8 × 2 3/8 in. (57.5 × 74 × 6.1 cm)

Tacoma Art Museum, Haub Family Collection, Gift of Erivan and Helga Haub, 2014.6.19



17

James Lippitt Clark (American, 1883 - 1969)

Caribou, 1925

Bronze

Overall: 13 1/4 × 13 1/2 × 4 3/4 in. (33.7 × 34.3 × 12.1 cm)

Tacoma Art Museum, Haub Family Collection, Gift of Erivan and Helga Haub, 2014.6.20



18

John Clymer (American, 1907 - 1989)

Mt. Rainier from Umtanum Ridge, 1938

Oil on board

Image Overall: 12 × 16 in. (30.5 × 40.6 cm)

Tacoma Art Museum, Haub Family Collection, Gift of Erivan and Helga Haub, 2014.6.21

19

John Clymer (American, 1907 - 1989)

Boy on Horse, 1949

Oil on canvas

Image Overall: 31 7/8 x 25 1/8 in. (81 x 63.8 cm)

Tacoma Art Museum, Haub Family Collection, Gift of Erivan and Helga Haub, 2014.6.22



20

John Clymer (American, 1907 - 1989)

Chief Joseph, 1967

Oil on canvas

Image Overall: 30 x 40 in. (76.2 x 101.6 cm)

Tacoma Art Museum, Haub Family Collection, Gift of Erivan and Helga Haub, 2014.6.23



21

John Clymer (American, 1907 - 1989)

The North Wind, 1978

Oil on board

Image Overall: 10 x 20 in. (25.4 x 50.8 cm)

Tacoma Art Museum, Haub Family Collection, Gift of Erivan and Helga Haub, 2014.6.25



22

John Clymer (American, 1907 - 1989)

Ciboleros, 1979

Oil on canvas

Image Overall: 24 x 48 in. (61 x 121.9 cm)

Tacoma Art Museum, Haub Family Collection, Gift of Erivan and Helga Haub, 2014.6.26



23

John Clymer (American, 1907 - 1989)

Prairie Hunters, 1984

Oil on canvas

Image Overall: 8 x 22 in. (20.3 x 55.9 cm)

Tacoma Art Museum, Haub Family Collection, Gift of Erivan and Helga Haub, 2014.6.27



24

John Clymer (American, 1907 - 1989)

Late Arrivals—Green River Rendezvous, 1988

Oil on canvas

Image Overall: 24 x 48 in. (61 x 121.9 cm)

Tacoma Art Museum, Haub Family Collection, Promised gift of Erivan and Helga Haub



25

John Clymer (American, 1907 - 1989)

The Storyteller, circa 1935

Oil on canvas

Image Overall: 36 x 48 in. (91.4 x 121.9 cm)

Frame: 47 1/4 x 59 1/16 x 3 9/16 in. (120 x 150 x 9 cm)

Tacoma Art Museum, Haub Family Collection, Gift of Erivan and Helga Haub, 2014.6.28



26

John Clymer (American, 1907 - 1989)

The Twins, circa 1975

Oil on board

Image Overall: 23 3/8 x 35 3/8 in. (59.4 x 89.9 cm)

Frame: 34 1/2 x 46 5/8 x 2 15/16 in. (87.7 x 118.4 x 7.5 cm)

Tacoma Art Museum, Haub Family Collection, Gift of Erivan and Helga Haub, 2014.6.30



27

Michael Coleman (American, born 1946)

Passing Showers - Yellowstone, 1991

Gouache on paper

Image Overall: 13 1/2 x 10 in. (34.3 x 25.4 cm)

Sight (Rectangular work is matted with a curved top mat): 12 3/4 x 9 3/16 in. (32.4 x 23.3 cm)

Frame: 24 3/16 x 20 1/4 x 2 9/16 in. (61.5 x 51.4 x 6.5 cm)

Tacoma Art Museum, Haub Family Collection, Gift of Erivan and Helga Haub, 2014.6.31



28

Samuel Colman (American, 1832 - 1920)

The Grand Canyon, 1888

Pastel and watercolor on board

Image Overall: 17 × 21 in. (43.2 × 53.3 cm)

Tacoma Art Museum, Haub Family Collection, Gift of Erivan and Helga Haub, 2014.6.32

29

E. Irving Couse (American, 1866 - 1936)

Music of the Waters, 1911

Oil on canvas

Image Overall: 20 x 24 in. (50.8 x 61 cm)

Tacoma Art Museum, Haub Family Collection, Gift of Erivan and Helga Haub, 2014.6.33



30

E. Irving Couse (American, 1866 - 1936)

Leleshut-Chief of the Klickitats, circa 1897-1898

Oil on canvas

Image Overall: 47 × 25 1/2 in. (119.4 × 64.8 cm)

Collection of Liliane and Christian Haub



31

Catharine Critcher (American, 1868 - 1964)

Portrait of Star Road, circa 1930

Oil on canvas

Image Overall: 37 × 31 3/4 in. (94 × 80.6 cm)

Tacoma Art Museum, Haub Family Collection, Gift of Erivan and Helga Haub, 2014.6.34



32

Cyrus E. Dallin (American, 1861 - 1944)

Appeal to the Great Spirit

Bronze

Overall: 21 x 22 x 14 1/2 in. (53.3 x 55.9 x 36.8 cm)

Collection of Katrin and Karl-Erivan Haub



33

Cyrus E. Dallin (American, 1861 - 1944)

Signal of Peace, 1890

Bronze

Overall: 10 1/2 × 9 × 2 3/4 in. (26.7 × 22.9 × 7 cm)

Tacoma Art Museum, Haub Family Collection, Gift of Erivan and Helga Haub, 2014.6.35



34

Cyrus E. Dallin (American, 1861 - 1944)

On the Warpath, 1917

Bronze

Overall: $9 \times 8 \frac{1}{2} \times 2 \frac{1}{4}$ in. (22.9 \times 21.6 \times 5.7 cm)

Tacoma Art Museum, Haub Family Collection, Gift of Erivan and Helga Haub, 2014.6.36



35

Cyrus E. Dallin (American, 1861 - 1944)

The Scout, 1918

Bronze

Overall: $8 \frac{1}{8} \times 8 \times 3$ in. (20.6 \times 20.3 \times 7.6 cm)

Tacoma Art Museum, Haub Family Collection, Gift of Erivan and Helga Haub, 2014.6.37



36

Charles Deas (American, 1818 - 1867)

Dragoons Crossing River, circa 1844

Oil on canvas

Image Overall: $12 \frac{1}{4} \times 18$ in. (31.1 \times 45.7 cm)

Tacoma Art Museum, Haub Family Collection, Gift of Erivan and Helga Haub, 2014.6.38



37

Gerard Curtis Delano (American, 1890 - 1972)

Trappers with Red River Wagon, circa 1936

Ink on paper

Image Overall: 19 x 12 1/2 in. (48.3 x 31.8 cm)

Frame: 26 3/4 x 20 1/16 x 1 3/16 in. (68 x 51 x 3 cm)

Tacoma Art Museum, Haub Family Collection, Gift of Erivan and Helga Haub, 2014.6.39



38

Gerard Curtis Delano (American, 1890 - 1972)

Desert Cloud, not dated

Oil on board

Image Overall: 20 x 24 in. (50.8 x 61 cm)

Tacoma Art Museum, Haub Family Collection, Gift of Erivan and Helga Haub, 2014.6.40



39

Maynard Dixon (American, 1875 - 1946)

Roping a Palomino, 1908

Watercolor on paper

Image Overall: 14 x 21 in. (35.6 x 53.3 cm)

Tacoma Art Museum, Haub Family Collection, Gift of Erivan and Helga Haub, 2014.6.42



40

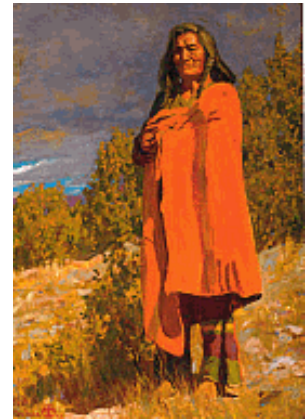
Maynard Dixon (American, 1875 - 1946)

Old Flathead, 1909

Oil on canvas on board

Image Overall: 20 1/2 x 14 1/2 in. (52.1 x 36.8 cm)

Tacoma Art Museum, Haub Family Collection, Gift of Erivan and Helga Haub, 2014.6.43



41

Maynard Dixon (American, 1875 - 1946)

A Desert Valley, 1922

Oil on board

Image Overall: 22 x 22 in. (55.9 x 55.9 cm)

Tacoma Art Museum, Haub Family Collection, Gift of Erivan and Helga Haub, 2014.6.44



42

W. Herbert Dunton (American, 1878 - 1936)

The Tenderfoot, 1907

Oil on canvas

Image Overall: 21 x 30 in. (53.3 x 76.2 cm)

Tacoma Art Museum, Haub Family Collection, Gift of Erivan and Helga Haub, 2014.6.45



43

W. Herbert Dunton (American, 1878 - 1936)

Summer Silhouette, circa 1930

Oil on canvas

Image Overall: 14 x 14 in. (35.6 x 35.6 cm)

Frame: 20 15/16 x 20 7/8 x 2 1/16 in. (53.2 x 53 x 5.2 cm)

Tacoma Art Museum, Haub Family Collection, Gift of Erivan and Helga Haub, 2014.6.46



44

Charlie Dye (American, 1906 - 1972)

A Rawhide Outfit, 1971

Oil on canvas

Image Overall: 30 x 48 in. (76.2 x 121.9 cm)

Tacoma Art Museum, Haub Family Collection, Gift of Erivan and Helga Haub, 2014.6.47.1



45

Charlie Dye (American, 1906 - 1972)

Study for A Rawhide Outfit, circa 1971

Graphite on paper

Image Overall: 30 x 48 in. (76.2 x 121.9 cm)

Tacoma Art Museum, Haub Family Collection, Gift of Erivan and Helga Haub, 2014.6.47.2



46

Nick Eggenhofer (German-American, 1897 - 1985)

Parley on the Bozeman Trail, 1964

Gouache on paper

Image Overall: 20 x 30 in. (50.8 x 76.2 cm)

Frame: 24 13/16 x 33 7/16 x 1 13/16 in. (63 x 85 x 4.6 cm)

Tacoma Art Museum, Haub Family Collection, Gift of Erivan and Helga Haub, 2014.6.48



47

Sally James Farnham (American, 1869 - 1943)

Will Rogers on Horseback, circa 1938

Bronze

Overall: 21 1/2 x 17 1/2 x 5 1/2 in. (54.6 x 44.5 x 14 cm)

Tacoma Art Museum, Haub Family Collection, Gift of Erivan and Helga Haub, 2014.6.49 A-B



48

Henry Farny (French-American, 1847 - 1916)

Indian Encampment, 1893

Gouache on paper

Image Overall: 7 1/2 x 16 3/8 in. (19.1 x 41.6 cm)

Frame: 17 1/8 x 26 3/16 x 3 in. (43.5 x 66.5 x 7.6 cm)

Tacoma Art Museum, Haub Family Collection, Gift of Erivan and Helga Haub, 2014.6.51



49

Henry Farny (French-American, 1847 - 1916)

Indians, 1900

Oil on canvas

Image Overall: 40 1/8 x 22 in. (101.9 x 55.9 cm)

Tacoma Art Museum, Haub Family Collection, Promised gift of Erivan and Helga Haub



50

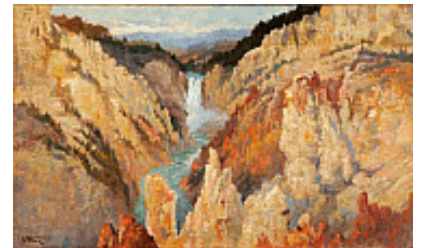
John Fery (Austrian-American, 1859 - 1934)

Lower Yellowstone Falls, 1914

Oil on canvas on board

Image Overall: 14 x 24 in. (35.6 x 61 cm)

Tacoma Art Museum, Haub Family Collection, Gift of Erivan and Helga Haub, 2014.6.52



51

Mike Flanagan (born 1941)

John Clymer en Plein Air, circa 1980

Bronze

Overall: 30 x 20 x 26 in. (76.2 x 50.8 x 66 cm)

Tacoma Art Museum, Haub Family Collection, Gift of Erivan and Helga Haub, 2014.6.53 A-C



52

James Earle Fraser (American, 1876 - 1953)

In the Wind (Windswept), circa 1915

Bronze

Overall: 4 7/8 × 7 1/2 × 2 in. (12.4 × 19.1 × 5.1 cm)

Tacoma Art Museum, Haub Family Collection, Gift of Erivan and Helga Haub, 2014.6.54



53

Nancy Glazier (American, born 1947)

Birds of a Feather, circa 1983

Oil on canvas

Image Overall: 24 x 32 in. (61 x 81.3 cm)

Tacoma Art Museum, Haub Family Collection, Gift of Erivan and Helga Haub, 2014.6.55



54

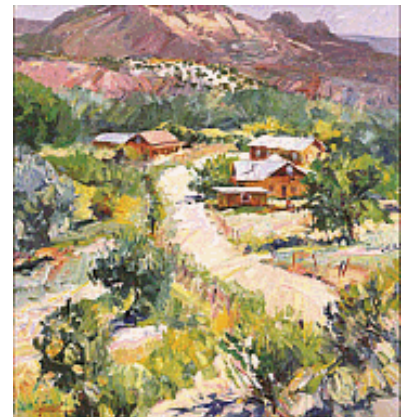
Walt Gonske (American, born 1942)

Along the Rio Grande Valley, circa 1995

Oil on canvas

Image Overall: 34 x 32 in. (86.4 x 81.3 cm)

Tacoma Art Museum, Haub Family Collection, Gift of Erivan and Helga Haub, 2014.6.56



55

Veryl Goodnight (American, born 1947)

Spirit of Autumn, 1984

Bronze

Overall: 16 × 24 × 12 in. (40.6 × 61 × 30.5 cm)

Tacoma Art Museum, Haub Family Collection, Gift of Erivan and Helga Haub, 2014.6.57



56

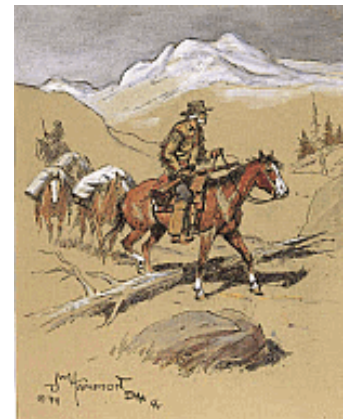
John W. Hampton (1918 - 1999)

Packing Out, 1999

Pen and watercolor on paper

Image Overall: 10 x 8 in. (25.4 x 20.3 cm)

Tacoma Art Museum, Haub Family Collection, Gift of Erivan and Helga Haub, 2014.6.58



57

E. Martin Hennings (American, 1886 - 1956)

Rabbit Hunt, Taos, circa 1930

Oil on canvas

Image Overall: 25 x 30 in. (63.5 x 76.2 cm)

Tacoma Art Museum, Haub Family Collection, Gift of Erivan and Helga Haub, 2014.6.60



58

E. Martin Hennings (American, 1886 - 1956)

Towering Aspens, circa 1940

Oil on canvas

Image Overall: 20 × 20 in. (50.8 × 50.8 cm)

Tacoma Art Museum, Haub Family Collection, Gift of Erivan and Helga Haub, 2014.6.61



59

Robert Henri (American, 1865 - 1929)

Young Buck of the Tesuque Pueblo, 1916

Oil on canvas

Image Overall: 24 × 20 in. (61 × 50.8 cm)

Frame: 30 1/2 × 26 1/2 × 2 in. (77.5 × 67.3 × 5.1 cm)

Tacoma Art Museum, Haub Family Collection, Gift of Erivan and Helga Haub, 2014.6.62



60

Victor Higgins (American, 1884 - 1949)

Spanish Well, circa 1935

Oil on canvas

Image Overall: 27 x 19 3/4 in. (68.6 x 50.2 cm)

Tacoma Art Museum, Haub Family Collection, Gift of Erivan and Helga Haub, 2014.6.63



61

Victor Higgins (American, 1884 - 1949)

Rio Grande, circa 1945

Oil on board

Image Overall: 11 x 18 in. (27.9 x 45.7 cm)

Tacoma Art Museum, Haub Family Collection, Gift of Erivan and Helga Haub, 2014.6.64



62

John D. Howland (American, 1843 - 1914)

Group of Buffalo on the Plains, 1883

Oil on canvas

Image Overall: 22 x 30 1/8 in. (55.9 x 76.5 cm)

Tacoma Art Museum, Haub Family Collection, Gift of Erivan and Helga Haub, 2014.6.65

63

Clark Hulings (American, 1922 - 2011)

Woodbearers of Chimayo, 1954

Oil on canvas

Image Overall: 30 x 60 in. (76.2 x 152.4 cm)

Tacoma Art Museum, Haub Family Collection, Gift of Erivan and Helga Haub, 2014.6.66



64

Peter Hurd (American, 1904 - 1984)

River Bend Below Hondo, circa 1960

Watercolor on paper

Image Overall: 20 x 28 3/4 in. (50.8 x 73 cm)

Tacoma Art Museum, Haub Family Collection, Gift of Erivan and Helga Haub, 2014.6.67



65

Doug Hyde (American, born 1946)

Santa Fe Indian Market, not dated

Alabaster

Overall: 20 1/2 x 12 x 10 1/4 in., 63.93 lb. (52.1 x 30.5 x 26 cm, 29 kg)

Figure: 17 3/4 in. (45.1 cm)

Base: 2 1/2 x 12 x 10 1/4 in. (6.4 x 30.5 x 26 cm)

Tacoma Art Museum, Haub Family Collection, Gift of Erivan and Helga Haub, 2014.6.68



66

Henry Inman (American, 1801 - 1846)

Chief of the Foxes, circa 1832

Oil on canvas

Image Overall: 30 x 25 in. (76.2 x 63.5 cm)

Sight: 29 1/4 x 24 1/4 in. (74.3 x 61.6 cm)

Frame: 38 3/4 x 33 3/4 x 2 in. (98.4 x 85.7 x 5.1 cm)

Tacoma Art Museum, Haub Family Collection, Promised gift of Erivan and Helga Haub



67

Henry Inman (American, 1801 - 1846)

Naw-Kaw, circa 1832

Oil on canvas

Image Overall: 30 1/4 x 25 1/4 in. (76.8 x 64.1 cm)

Tacoma Art Museum, Haub Family Collection, Gift of Erivan and Helga Haub, 2014.6.69



68

Harry Jackson (American, 1924 - 2011)

Pony Express, 1967

Bronze

Overall: 21 x 22 x 13 1/4 in., 70.55 lb. (53.3 x 55.9 x 33.7 cm, 32 kg)

Tacoma Art Museum, Haub Family Collection, Gift of Erivan and Helga Haub, 2014.6.70 A-B



69

Harry Jackson (American, 1924 - 2011)

Washakie, 1978

Bronze

Overall: 36 x 29 x 14 in. (91.4 x 73.7 x 35.6 cm)

Tacoma Art Museum, Haub Family Collection, Gift of Erivan and Helga Haub, 2014.6.71



70

Frank Tenney Johnson (American, 1874 - 1939)

On the Drive, 1938

Oil on canvas

Image Overall: 30 x 40 in. (76.2 x 101.6 cm)

Frame: 36 3/16 x 45 7/8 x 2 3/8 in. (91.9 x 116.5 x 6 cm)

Tacoma Art Museum, Haub Family Collection, Gift of Erivan and Helga Haub, 2014.6.72



71

Paul Kane (Irish-Canadian, 1810 - 1871)

Portrait of Maungwudaus, circa 1851

Oil on canvas

Image Overall: 30 x 25 in. (76.2 x 63.5 cm)

Frame: 44 x 37 1/2 x 4 3/4 in. (111.7 x 95.2 x 12 cm)

Tacoma Art Museum, Haub Family Collection, Gift of Erivan and Helga Haub, 2014.6.73



72

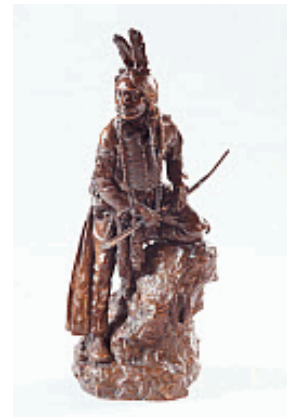
Carl Kauba (Austrian, 1865 - 1922)

The Indian Scout, circa 1905

Bronze

Overall: 17 7/8 x 8 x 7 in. (45.4 x 20.3 x 17.8 cm)

Tacoma Art Museum, Haub Family Collection, Gift of Erivan and Helga Haub, 2014.6.74



73

Steve Kestrel (American, born 1948)

Trickster, 1985

Bronze

Overall: 27 x 5 x 6 in. (68.6 x 12.7 x 15.2 cm)

Tacoma Art Museum, Haub Family Collection, Gift of Erivan and Helga Haub, 2014.6.75



74

Steve Kestrel (American, born 1948)

Rattle Me Naught, 2008

Bronze

Overall: 6 x 9 x 6 in. (15.2 x 22.9 x 15.2 cm)

Tacoma Art Museum, Haub Family Collection, Promised gift of Erivan and Helga Haub



75

Charles Bird King (American, 1785 - 1862)

Wanata (The Charger), Grand Chief of the Sioux, 1826

Oil on canvas

Image Overall: 39 x 27 1/4 in. (99.1 x 69.2 cm)

Frame: 46 13/16 x 34 13/16 x 3 1/8 in. (118.9 x 88.5 x 8 cm)

Tacoma Art Museum, Haub Family Collection, Gift of Erivan and Helga Haub, 2014.6.76



76

W. H. D. Koerner (German-American, 1878 - 1938)

Not Much of a Hand, 1927

Oil on canvas

Image Overall: 28 x 40 in. (71.1 x 101.6 cm)

Tacoma Art Museum, Haub Family Collection, Gift of Erivan and Helga Haub, 2014.6.77



77

Sydney Laurence (American, 1865 - 1940)

Mount McKinley, 1919

Oil on canvas

Image Overall: 15 x 20 in. (38.1 x 50.8 cm)

Frame: 20 1/16 x 24 15/16 x 2 1/4 in. (51 x 63.4 x 5.7 cm)

Tacoma Art Museum, Haub Family Collection, Gift of Erivan and Helga Haub, 2014.6.78



78

William R. Leigh (American, 1866 - 1955)

Wyoming Sheep Hunter, 1941

Oil on canvas

Image Overall: 24 x 29 in. (61 x 73.7 cm)

Tacoma Art Museum, Haub Family Collection, Gift of Erivan and Helga Haub, 2014.6.79



79

Tom Lovell (American, 1909 - 1997)

Old Santa Fe, circa 1990

Oil on board

Image Overall: 23 x 40 in. (58.4 x 101.6 cm)

Tacoma Art Museum, Haub Family Collection, Gift of Erivan and Helga Haub, 2014.6.81



80

Tom Lovell (American, 1909 - 1997)

Study for The Dragoon's Hat, circa 1991

Pastel on paper

Image Overall: 7 1/2 x 11 in. (19.1 x 27.9 cm)

Tacoma Art Museum, Haub Family Collection, Gift of Erivan and Helga Haub, 2014.6.82



81

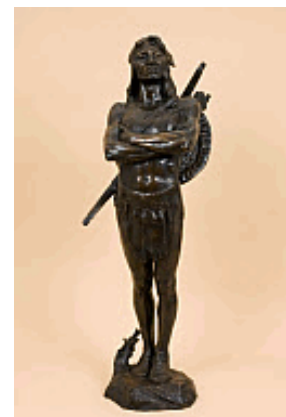
Hermon Atkins MacNeil (American, 1866 - 1947)

A Chief of the Multnomah Tribe, modeled 1907; cast 1912-1914

Bronze

Overall: 31 1/2 x 13 x 12 in. (80 x 33 x 30.5 cm)

Tacoma Art Museum, Haub Family Collection, Gift of Erivan and Helga Haub, 2014.6.83



82

Paul Manship (American, 1885 - 1966)

Squirrel, circa 1930

Bronze

Height: 16 in. (40.6 cm)

Tacoma Art Museum, Haub Family Collection, Gift of Erivan and Helga Haub, 2014.6.84.1



83

Paul Manship (American, 1885 - 1966)

Squirrel, circa 1930

Bronze

Height: 16 in. (40.6 cm)

Tacoma Art Museum, Haub Family Collection, Gift of Erivan and Helga Haub, 2014.6.84.2



84

Paul Manship (American, 1885 - 1966)

Model for Alfred E. Smith Memorial Flagpole Base, circa 1946

Bronze

Overall: 9 × 7 × 6 in. (22.9 × 17.8 × 15.2 cm)

Tacoma Art Museum, Haub Family Collection, Gift of Erivan and Helga Haub, 2014.6.85



85

Ed Mell (American, born 1942)

Rain and Runoff, 2003

Oil on linen

Image Overall: 36 × 54 in. (91.4 × 137.2 cm)

Frame: 42 15/16 × 61 × 1 3/4 in. (109 × 155 × 4.5 cm)

Tacoma Art Museum, Haub Family Collection, Gift of Erivan and Helga Haub, 2014.6.86



86

Alfred Jacob Miller (American, 1810 - 1874)

Scene on the Big Sandy River, circa 1860

Oil on paper mounted on board

Image Overall: 9 1/4 × 12 in. (23.5 × 30.5 cm)

Frame: 18 1/8 × 20 15/16 × 2 15/16 in. (46 × 53.2 × 7.5 cm)

Tacoma Art Museum, Haub Family Collection, Gift of Erivan and Helga Haub, 2014.6.87



87

Thomas Moran (English-American, 1837 - 1926)

Green River, Wyoming, 1907

Oil on canvas

Image Overall: 20 × 28 1/2 in. (50.8 × 72.4 cm)

Frame: 29 5/16 × 37 13/16 × 3 11/16 in. (74.5 × 96 × 9.3 cm)

Tacoma Art Museum, Haub Family Collection, Gift of Erivan and Helga Haub, 2014.6.88



88

John Nieto (American, born 1936)

Buffalo at Sunset, 1996

Acrylic on canvas

Image Overall: 48 x 60 in. (121.9 x 152.4 cm)

Frame: 49 13/16 x 62 x 1 15/16 in. (126.5 x 157.5 x 5 cm)

Tacoma Art Museum, Haub Family Collection, Gift of Erivan and Helga Haub, 2014.6.89



89

John Nieto (American, born 1936)

Coyote, 2008

Oil on canvas

Image Overall: 16 x 20 in. (40.6 x 50.8 cm)

Tacoma Art Museum, Haub Family Collection, Gift of Erivan and Helga Haub, 2014.6.90



90

Jim Norton (born 1953)

Through the Rye, 1990

Oil on canvas

Image Overall: 24 x 32 in. (61 x 81.3 cm)

Collection of Sigrid and Georg Haub



91

Georgia O'Keeffe (American, 1887 - 1986)

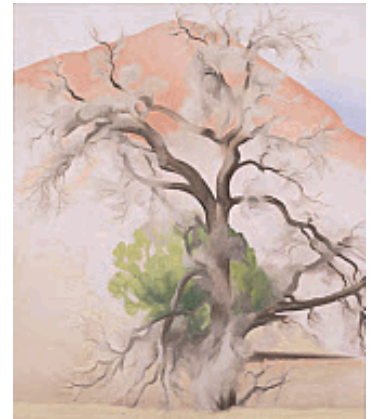
Piñons with Cedar, 1956

Oil on canvas

Image Overall: 30 x 26 in. (76.2 x 66 cm)

Frame: 30 1/8 x 26 1/8 x 1 1/2 in. (76.5 x 66.4 x 3.8 cm)

Tacoma Art Museum, Haub Family Collection, Gift of Erivan and Helga Haub, 2014.6.91



92

Alexander Phimister Proctor (1860 - 1950)

Panther, 1891-1892

Bronze

Overall: 9 3/4 x 37 x 6 1/2 in. (24.8 x 94 x 16.5 cm)

Tacoma Art Museum, Haub Family Collection, Gift of Erivan and Helga Haub, 2014.6.93



93

Alexander Phimister Proctor (1860 - 1950)

Indian Warrior, 1898

Bronze

Overall: 19 1/2 in. (49.5 cm)

Tacoma Art Museum, Haub Family Collection, Gift of Erivan and Helga Haub, 2014.6.94

94

Alexander Phimister Proctor (1860 - 1950)

Pursued, 1914

Bronze

Overall (Including spear): 16 1/2 × 23 × 6 in. (41.9 × 58.4 × 15.2 cm)

Tacoma Art Museum, Haub Family Collection, Gift of Erivan and Helga Haub, 2014.6.95



95

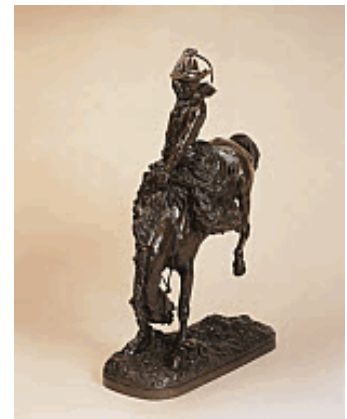
Alexander Phimister Proctor (1860 - 1950)

Buckaroo, 1915

Bronze

Overall: 28 3/8 × 20 1/2 × 8 in. (72.1 × 52.1 × 20.3 cm)

Tacoma Art Museum, Haub Family Collection, Gift of Erivan and Helga Haub, 2014.6.96



96

Alexander Phimister Proctor (1860 - 1950)

Pony Express, 1931

Bronze relief

Diameter: 17 in. (43.2 cm)

Tacoma Art Museum, Haub Family Collection, Gift of Erivan and Helga Haub, 2014.6.97

97

William Ranney (American, 1813 - 1857)

The Trappers, circa 1856

Oil on canvas

Image Overall: 8 3/4 x 12 in. (22.2 x 30.5 cm)

Tacoma Art Museum, Haub Family Collection, Gift of Erivan and Helga Haub, 2014.6.98



98

Kevin Red Star (American, born 1943)

Crow War Shield, 1984

Acrylic on canvas

Image Overall: 32 x 28 in. (81.3 x 71.1 cm)

Tacoma Art Museum, Haub Family Collection, Gift of Erivan and Helga Haub, 2014.6.99



99

Kevin Red Star (American, born 1943)

Buffalo Horse Medicine, circa 2007

Mixed media

Image Overall: 44 x 40 in. (111.8 x 101.6 cm)

Tacoma Art Museum, Haub Family Collection, Promised gift of Erivan and Helga Haub



100

Frederic Remington (American, 1861 - 1909)

Conjuring Back the Buffalo, circa 1889

Oil on canvas

Image Overall: 35 x 20 in. (88.9 x 50.8 cm)

Tacoma Art Museum, Haub Family Collection, Gift of Erivan and Helga Haub, 2014.6.100



101

Carl Rungius (German-American, 1869 - 1959)

Bighorn Sheep, 1916

Bronze

Overall: 17 x 17 x 7 in. (43.2 x 43.2 x 17.8 cm)

Tacoma Art Museum, Haub Family Collection, Gift of Erivan and Helga Haub, 2014.6.101



102

Carl Rungius (German-American, 1869 - 1959)

On the Ram River, 1938

Oil on canvas

Image Overall: 25 x 30 in. (63.5 x 76.2 cm)

Tacoma Art Museum, Haub Family Collection, Gift of Erivan and Helga Haub, 2014.6.102



103

Charles M. Russell (American, 1864 - 1926)

Rider of the Rough String, 1890

Oil on canvas

Image Overall: 14 x 24 in. (35.6 x 61 cm)

Tacoma Art Museum, Haub Family Collection, Gift of Erivan and Helga Haub, 2014.6.103



104

Charles M. Russell (American, 1864 - 1926)

Illustrated letter and envelope to Moris Wiess (Maurice Weiss), 1902

Ink and watercolor on paper

Image Overall: 9 x 6 in. (22.9 x 15.2 cm)

Frame: 16 1/8 x 13 3/8 x 13/16 in. (41 x 34 x 2 cm)

Tacoma Art Museum, Haub Family Collection, Gift of Erivan and Helga Haub, 2014.6.104



105

Charles M. Russell (American, 1864 - 1926)

Indians Scouting a Wagon Train, 1902

Watercolor on paper

Image Overall: 14 1/2 x 21 3/8 in. (36.8 x 54.3 cm)

Tacoma Art Museum, Haub Family Collection, Gift of Erivan and Helga Haub, 2014.6.105



106

Charles M. Russell (American, 1864 - 1926)

When the Plains Were His, 1906

Oil on canvas

Image Overall: 15 1/4 x 15 1/4 in. (38.7 x 38.7 cm)

Tacoma Art Museum, Haub Family Collection, Gift of Erivan and Helga Haub, 2014.6.106



107

Charles M. Russell (American, 1864 - 1926)

Cowboy Lassoing a Steer, circa 1892

Watercolor on paper

Image Overall: 6 1/4 x 11 3/4 in. (15.9 x 29.8 cm)

Tacoma Art Museum, Haub Family Collection, Gift of Erivan and Helga Haub, 2014.6.107



108

Charles M. Russell (American, 1864 - 1926)

Sleeping Thunder, modeled 1901; cast 1927-1929

Bronze

Overall: 7 x 6 5/8 x 4 1/2 in. (17.8 x 16.8 x 11.4 cm)

Tacoma Art Museum, Haub Family Collection, Gift of Erivan and Helga Haub, 2014.6.108



109

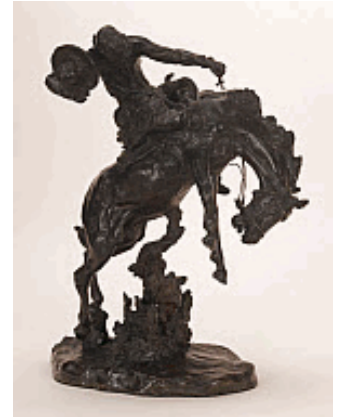
Charles M. Russell (American, 1864 - 1926)

A Bronc Twister, modeled 1911; cast circa 1929-1933

Bronze

Overall: 18 × 14 1/2 × 9 1/2 in. (45.7 × 36.8 × 24.1 cm)

Tacoma Art Museum, Haub Family Collection, Gift of Erivan and Helga Haub, 2014.6.109



110

Charles M. Russell (American, 1864 - 1926)

Where the Best Riders Quit, modeled 1921-1922; cast circa 1929-1934

Bronze

Overall: 14 1/2 × 7 3/4 × 8 1/2 in. (36.8 × 19.7 × 21.6 cm)

Tacoma Art Museum, Haub Family Collection, Gift of Erivan and Helga Haub, 2014.6.110



111

Charles M. Russell (American, 1864 - 1926)

Wolf with Bone, modeled circa 1901; cast circa 1941-1942

Bronze

Overall: 7 × 6 5/8 × 4 1/2 in. (17.8 × 16.8 × 11.4 cm)

Tacoma Art Museum, Haub Family Collection, Gift of Erivan and Helga Haub, 2014.6.111



112

Birger Sandzén (Swedish-American, 1871 - 1954)

Autumn (Smoky Hill River, Kansas), 1944

Oil on canvas mounted on panel

Image Overall: 20 x 24 in. (50.8 x 61 cm)

Frame: 27 x 31 x 2 1/2 in. (68.6 x 78.7 x 6.4 cm)

Tacoma Art Museum, Haub Family Collection, Gift of Erivan and Helga Haub, 2014.6.112



113

Bill Schenck (American, born 1947)

Cowgirl Over Kachina Mesa, 1996

Oil on canvas

Image Overall: 35 x 45 in. (88.9 x 114.3 cm)

Tacoma Art Museum, Haub Family Collection, Gift of Erivan and Helga Haub, 2014.6.113



114

Bill Schenck (American, born 1947)

Snakes in the Grass, 1996

Oil on canvas

Image Overall (image and stretcher): 45 1/2 x 60 1/2 in. (115.6 x 153.7 cm)

Tacoma Art Museum, Haub Family Collection, Gift of Erivan and Helga Haub, 2014.6.114



115

Bill Schenck (American, born 1947)

An Ancient Place, 1999

Oil on canvas

Image Overall: 40 x 50 in. (101.6 x 127 cm)

Tacoma Art Museum, Haub Family Collection, Gift of Erivan and Helga Haub, 2014.6.115



116

Bill Schenck (American, born 1947)

South of the San Juan River, 2002

Oil on canvas

Image Overall: 48 x 80 in. (121.9 x 203.2 cm)

Frame: 50 x 81 3/4 x 1 7/16 in. (127 x 207.7 x 3.7 cm)

Tacoma Art Museum, Haub Family Collection, Gift of Erivan and Helga Haub, 2014.6.116



117

Charles Schreyvogel (1861 - 1912)

The Last Drop, 1900

Oil on canvas

Image Overall: 16 x 20 in. (40.6 x 50.8 cm)

Tacoma Art Museum, Haub Family Collection, Gift of Erivan and Helga Haub, 2014.6.117



118

Charles Schreyvogel (1861 - 1912)

The Last Drop, 1903

Bronze

Overall: 11 5/8 × 18 3/4 × 5 1/4 in. (29.5 × 47.6 × 13.3 cm)

Tacoma Art Museum, Haub Family Collection, Gift of Erivan and Helga Haub, 2014.6.118



119

Robert Seabeck (American, born 1945)

Clouds, circa 1998

Oil on Masonite

Image Overall: 25 x 48 in. (63.5 x 121.9 cm)

Tacoma Art Museum, Haub Family Collection, Gift of Erivan and Helga Haub, 2014.6.119



120

Olaf C. Seltzer (Danish-American, 1877 - 1957)

Trail of the Iron Horse, circa 1930

Oil on canvas

Image Overall: 20 x 30 in. (50.8 x 76.2 cm)

Tacoma Art Museum, Haub Family Collection, Gift of Erivan and Helga Haub, 2014.6.121



121

Joseph Henry Sharp (American, 1859 - 1953)

Taos Indians in the Sunlight, circa 1920

Oil on canvas

Image Overall: 18 x 24 in. (45.7 x 61 cm)

Frame: 24 13/16 x 30 7/8 x 2 9/16 in. (63.1 x 78.5 x 6.5 cm)

Tacoma Art Museum, Haub Family Collection, Gift of Erivan and Helga Haub, 2014.6.122



122

Henry Merwin Shrady (American, 1871 - 1922)

Bull Moose, 1900

Bronze

Overall: 20 x 19 x 10 in. (50.8 x 48.3 x 25.4 cm)

Tacoma Art Museum, Haub Family Collection, Gift of Erivan and Helga Haub, 2014.6.123



123

Henry Merwin Shrady (American, 1871 - 1922)

Elk Buffalo (The Monarch of the Plains), circa 1900

Bronze

Overall: 22 1/2 x 24 x 13 in. (57.2 x 61 x 33 cm)

Tacoma Art Museum, Haub Family Collection, Gift of Erivan and Helga Haub, 2014.6.124



124

Mian Situ (Chinese-American, born 1953)

The Entrepreneur—San Francisco, 2006

Oil on canvas

Image Overall: 44 x 54 in. (111.8 x 137.2 cm)

Frame: 57 1/16 x 67 x 3 15/16 in. (145 x 170.2 x 10 cm)

Tacoma Art Museum, Haub Family Collection, Gift of Erivan and Helga Haub, 2014.6.126



125

John Mix Stanley (American, 1814 - 1872)

Scene on the Columbia River, 1852

Oil on canvas

Image Overall: 17 1/8 x 21 1/8 in. (43.5 x 53.7 cm)

Frame: 24 5/16 x 28 5/16 x 4 1/2 in. (61.8 x 71.9 x 11.5 cm)

Tacoma Art Museum, Haub Family Collection, Gift of Erivan and Helga Haub, 2014.6.127



126

John Mix Stanley (American, 1814 - 1872)

Young Chief, 1868

Oil on canvas

Image Overall: 20 x 16 in. (50.8 x 40.6 cm)

Frame: 27 9/16 x 23 7/16 x 1 3/8 in. (70 x 59.5 x 3.5 cm)

Tacoma Art Museum, Haub Family Collection, Gift of Erivan and Helga Haub, 2014.6.128



127

cl

Junius Brutus Stearns (American, 1810 - 1885)

The Meeting of Tecumseh and William Henry Harrison at Vincennes, 1851

Oil on canvas

Image Overall: 33 3/8 × 43 3/8 in. (84.8 × 110.2 cm)

Tacoma Art Museum, Haub Family Collection, Gift of Erivan and Helga Haub, 2014.6.129

128

Gilbert Stuart (American, 1755 - 1828)

Portrait of George Washington, circa 1797

Oil on canvas

Image Overall: 28 1/8 × 24 3/16 in. (71.4 × 61.4 cm)

Tacoma Art Museum, Haub Family Collection, Gift of Erivan and Helga Haub, 2014.6.130

129

Howard Terpning (American, born 1927)

Winter Solitude, 1978

Oil on canvas

Image Overall: 18 x 12 in. (45.7 x 30.5 cm)

Tacoma Art Museum, Haub Family Collection, Gift of Erivan and Helga Haub, 2014.6.131



130

Walter Ufer (German-American, 1876 - 1936)

Waiting for the Gate to Open, circa 1935

Oil on canvas

Image Overall: 25 x 30 in. (63.5 x 76.2 cm)

Tacoma Art Museum, Haub Family Collection, Gift of Erivan and Helga Haub, 2014.6.133



131

Curt Walters (American, born 1950)

Supreme Moment of Evening, 1993

Oil on canvas

Image Overall: 40 x 60 in. (101.6 x 152.4 cm)

Frame: 46 3/4 x 66 3/4 x 2 3/8 in. (118.8 x 169.5 x 6 cm)

Tacoma Art Museum, Haub Family Collection, Gift of Erivan and Helga Haub, 2014.6.134



132

Carl Ferdinand Wimar (German-American, 1828 - 1862)

Captive Charger, 1854

Oil on paper mounted on board

Image Overall: 12 7/8 x 17 3/4 in. (32.7 x 45.1 cm)

Frame: 19 5/8 x 24 1/2 x 2 1/2 in. (49.8 x 62.2 x 6.4 cm)

Tacoma Art Museum, Haub Family Collection, Gift of Erivan and Helga Haub, 2014.6.135



N. C. Wyeth (American, 1882 - 1945)

Autumn Dawn, 1915

Oil on canvas

Image Overall: 34 × 46 in. (86.4 × 116.8 cm)

Tacoma Art Museum, Haub Family Collection, Gift of Erivan and Helga Haub, 2014.6.136

